



# S & N LABS

2021 E. Fourth Street

Santa Ana, California 92705

(714) 543-2211

9 December 2011

Job Number:	17719
PO Number:	verbal

Matthew Mattoon  
Matunas  
P.O. Box 1716  
Sunset Beach, California 90742

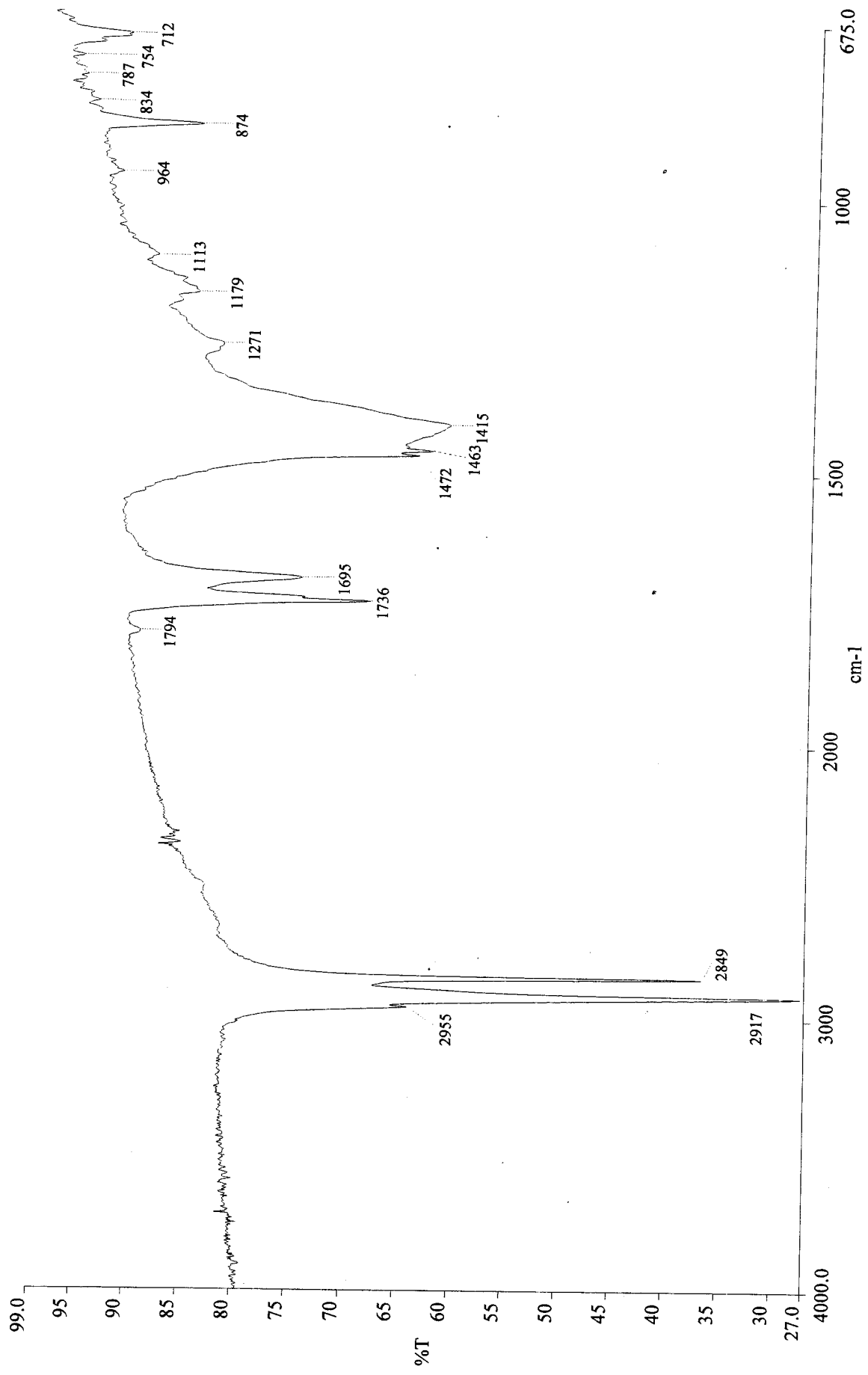
## REPORT OF ANALYSIS

---

One block of tan wax in a bag labeled "Matunas cold" was received on 2 December 2011. The wax was analyzed using Fourier-transform infrared spectroscopy (FT-IR). The resulting spectrum showed a mixture containing an aliphatic ester and some inorganic salts.

The organic component was examined using gas chromatography. A complex pattern of peaks was present in the resulting chromatogram. The majority of these peaks are attributed to natural wax components and are consistent with vegetable wax and/or beeswax. Therefore, most of the organic components of this product are of natural origin.

Neil E. Spingarn, Ph.D.  
President



Resolution: 4 cm-1  
 Detector: MCT  
 Analyst: Spingarn  
 Accumulations: 32  
 Apodization: Strong

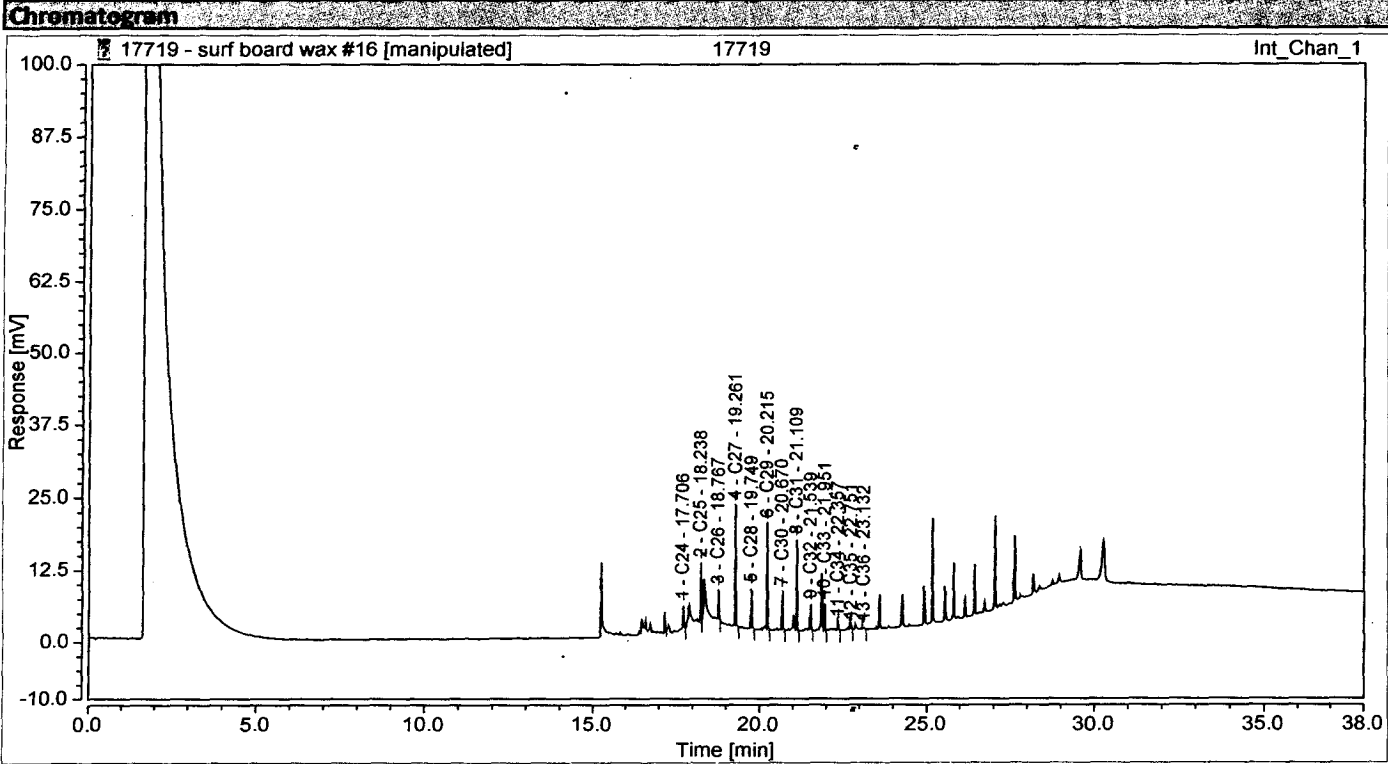
**S&N Labs**

Description: Matuna Cold

Date Created: Friday, December 02, 2011 3:57 PM Pacific Standard Time

### Chromatogram and Results

Injection Details			
Injection Name:	17719	Run Time (min):	38.00
Vial Number:	0	Injection Volume:	1.00
Injection Type:	Unknown	Channel:	Int_Chain_1
Calibration Level:		Wavelength:	n.a.
Instrument Method:	17719 - surf board wax	Bandwidth:	n.a.
Processing Method:	17719 - surf board wax	Dilution Factor:	1.0000
Injection Date/Time:	06/Dec/11 17:54	Sample Weight:	1.0000



Integration Results							
No.	Peak Name	Retention Time min	Area mV*min	Height mV	Relative Area %	Relative Height %	Amount
n.a.	C12	n.a.	n.a.	n.a.	n.a.	n.a.	n.a.
n.a.	C14	n.a.	n.a.	n.a.	n.a.	n.a.	n.a.
n.a.	C16	n.a.	n.a.	n.a.	n.a.	n.a.	n.a.
n.a.	C18	n.a.	n.a.	n.a.	n.a.	n.a.	n.a.
n.a.	C20	n.a.	n.a.	n.a.	n.a.	n.a.	n.a.
1	C24	17.706	0.097	4.082	4.15	4.05	n.a.
2	C25	18.238	0.210	10.264	8.99	10.19	n.a.
3	C26	18.767	0.132	5.179	5.66	5.14	n.a.
4	C27	19.261	0.503	21.063	21.58	20.91	n.a.
5	C28	19.749	0.173	7.157	7.44	7.10	n.a.
6	C29	20.215	0.411	18.081	17.61	17.95	n.a.
7	C30	20.670	0.169	6.901	7.25	6.85	n.a.
8	C31	21.109	0.360	15.853	15.42	15.74	n.a.
9	C32	21.539	0.106	4.607	4.54	4.57	n.a.
10	C33	21.951	0.105	4.623	4.51	4.59	n.a.
11	C34	22.357	0.037	1.478	1.59	1.47	n.a.
12	C35	22.751	0.018	0.877	0.76	0.87	n.a.
13	C36	23.132	0.011	0.567	0.49	0.56	n.a.
n.a.	C40	n.a.	n.a.	n.a.	n.a.	n.a.	n.a.
n.a.	C44	n.a.	n.a.	n.a.	n.a.	n.a.	n.a.
<b>Total:</b>			<b>2.332</b>	<b>100.732</b>	<b>100.00</b>	<b>100.00</b>	

# Chromatogram

